

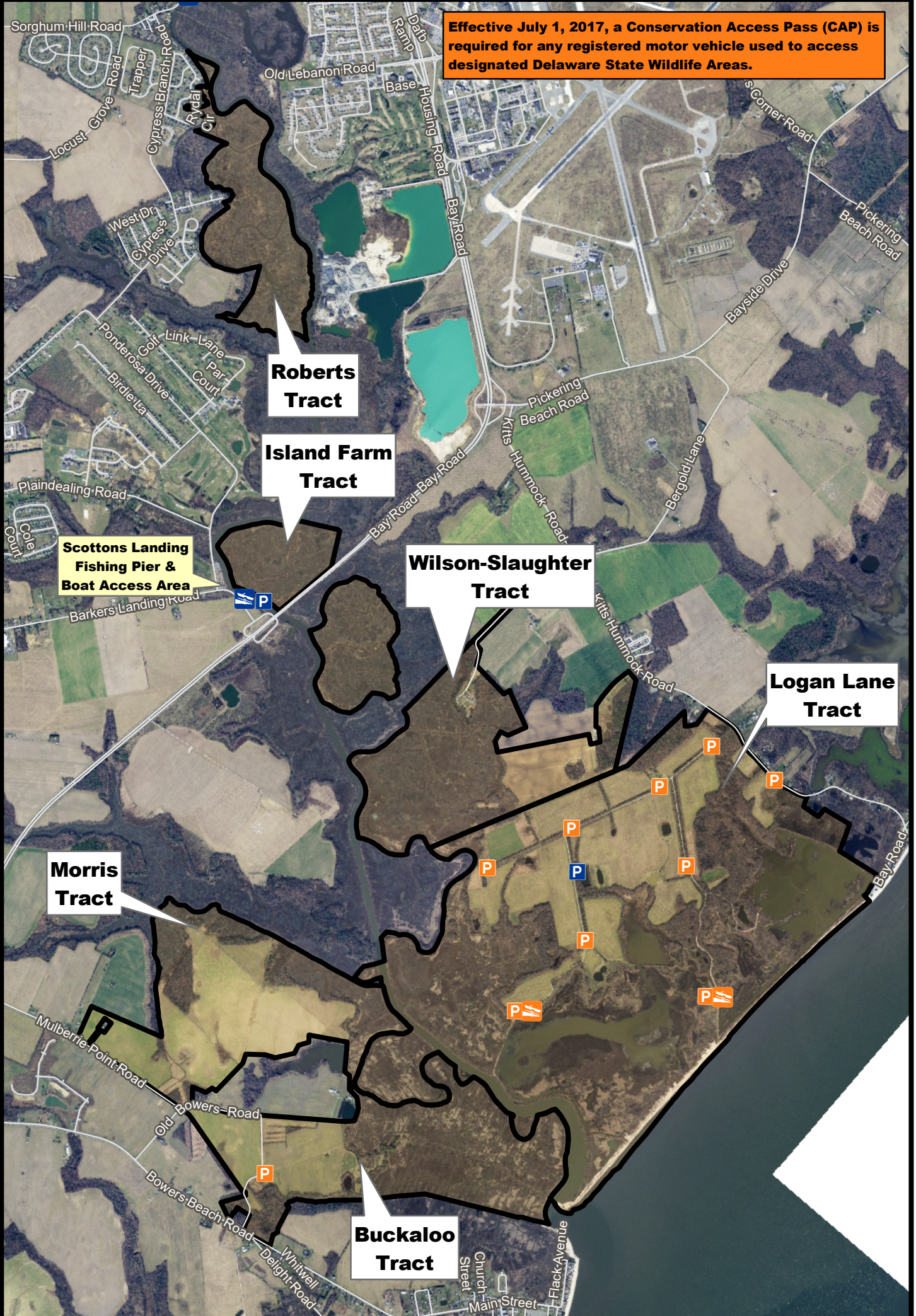







# TED HARVEY CONSERVATION AREA

We Bring You Delaware's Great Outdoors  
through Science and Service



Effective July 1, 2017, a Conservation Access Pass (CAP) is required for any registered motor vehicle used to access designated Delaware State Wildlife Areas.



-  Wildlife Area
-  CAP Exempt
-  CAP Exempt
-  CAP Required
-  CAP Required



THE BOUNDARIES SHOWN  
ON THIS MAP ARE  
APPROXIMATE  
AND ARE ONLY TO BE  
USED AS A GUIDE.